



The Record



Spring/Summer 2019



Volume 46, Issue 1



JCHSColorado.org

A Docent's View of the American Museum of Western Art

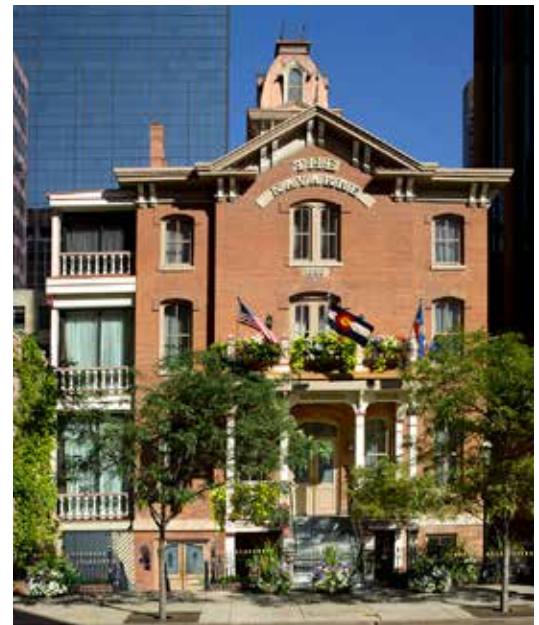
By Andrea Keppers, Curator, Hiwan Museum

Students, gamblers, hedonists, and humanists have all been drawn to the Navarre building through its 139 years. Currently, the Navarre is the home of the American Museum of Western Art – The Anschutz Collection. Initially, I was drawn there as a tourist and historian of American art, and for the last four years I have had the great fortune to volunteer as a docent in this wonderful museum and historic building. Studying American art and working in American museums for more than 20 years, I had seen works from the Anschutz collection in textbooks and in traveling exhibitions, and now I get to teach people about them in person.

Colorado-based businessman Phillip Anschutz has been collecting American art for 50 years, but the collection had no permanent home until 2010, when it was installed in the Navarre as the American Museum of Western Art (AMWA). Some of the most notable names in Western art are represented: Russell, Remington, Bierstadt, O'Keeffe. However, the mission of the museum goes beyond a "who's who" of American Western art to present a broader understanding of the history and character of the American West through visual art. The collection chronicles the last 200 years of westward expansion and exploration, from early artists who traveled west with military and civilian explorers, to contemporary artists who are reinterpreting what "Western art" looks like.

The building itself is part of the history of the West. Built in 1880 as a school called the Brinker Collegiate Institute, it was designed by Frank Edbooke, one of Denver's premier architects. Edbooke would go on to design major Denver landmarks like Central Presbyterian Church, Loretto Heights Academy, and the Brown Palace Hotel. When the Brinkers died, the school closed and the building was purchased in 1889 by two gamblers who turned it into a gentlemen's social club. Legend suggests that the club was soon lost in a card game (Denver was still the "Wild West," after all), and the new owners made the building into a brothel, casino, and restaurant. They renamed the building "The Navarre," after King Henry of Navarre, a noted sensualist. When the Brown Palace was being built across the street (1889-1892), a tunnel was dug under Tremont to connect the two buildings and provided a way for clients to move surreptitiously between the first-class hotel and the seedier delights of the Navarre. In 1904, Denver mayor Robert Speer was elected on a platform of reform and closed bordellos and casinos throughout the city. The Navarre became a respectable restaurant from that point on, passing from

Continued on page 3.



In this Issue:

A Docent's View	1
President's Pen	2
Membership Renewal	3
Mary Helen Crain Part 2	4
The Bookshelf	6
Moonshiners & Gunslingers	6
Book Club	7
Up Coming Events	7

REFLECTIONS: President's Pen

By Elaine Hayden

As I guided a tour of Hiwan Museum last week I was reminded of the service our docents provide to a diverse community. The tourists I led were a delightful group of seniors who use wheelchairs. Their enthusiasm was infectious as they left me with a feeling of satisfaction while they departed with memories of having been given access to a great tour of our historic house museum. The diversity with which we fulfill our vision of preserving and presenting history is evident in our accommodation of a wide ranging community and information requests. Every effort is made to accommodate our patrons; from the school children who partake in Hiwan's educational programs, to the senior wheelchair users, to the letter request from a state prison resident for genealogical and historical information. I feel pride in the ability and willingness of EMAHS and the Hiwan staff to offer services at Hiwan Museum through tours, programs and archival research.

EMAHS delivered the first edition of the electronic newsletter update in March. I have received positive feedback and we will continue with the electronic updates in March and September and with the printed version of The Record mailed to members in June and December. Any member who wishes to contribute an article to be included in the newsletter can contact me. I'm certain we have undiscovered talent in our midst!

January at Hiwan Museum welcomed the Jeffco cleaning staff as they performed a deep cleaning of the museum during

the last week of the month. Thanks to the cleaning staff for regarding our collection with respect and care during this process.

In February, we welcomed Navajo weaver, Lynda Teller Pete, and her husband, Belvin Pete to Hiwan for a Saturday morning book signing event. We are always happy to host the Pete's as they enlighten us with stories and displays of incredible Navajo weaving techniques and masterpieces (See Book Shelf in this issue).

Also in February EMAHS showed appreciation to our loyal volunteers at a luncheon at the museum. Andrea Keppers spoke about and displayed an oil painting that was uncovered in Eric's House during a de-cluttering process. Research is ongoing as to the origin of the painting. We are fortunate to have Andrea and her art history knowledge included in our museum community. A long-awaited complete inventory of our collections, housed at Hiwan Museum, will begin in late May or June. The inventory project will be facilitated by a professional team that has worked in many regional museums. Once completed, we will have a digitized file that will enable us to more easily assess our collections for insurance purposes as well as identification and location of artifacts of great importance to the Camp Neosho/Hiwan Ranch narrative.

Our 4th History Round Table gathering was presented by our own Joyce Rutherford in April. She related the

life and accomplishments of builder, Al Rugg, Jr. who was responsible for the log construction of, among others, the Echo Lake Lodge, the Keys on the Green building, Indian Hills Trading Post and the lodge where Joyce and her family currently reside. Thank you, Joyce for a compelling story of a man who contributed to early Evergreen architecture.

The trail that winds along the northern perimeter of Heritage Grove has been improved by JCOS. The re-named Forestry Trail is complete with identifying markers for plants and trees as well as 'tree cookies' that offer information as to a tree's growth. Trail brochures are available in the museum and I encourage all to experience this short but enjoyable amble.

The summer months at Hiwan Museum are shaping up to include many events of interest including the opening of a new exhibit, the annual movie in the grove and special presentations (See the Events listing in this issue).

I remain in awe of the staff and volunteers at Hiwan Museum and the EMAHS membership for unfailing support and commitment to the presentation of our mountain area history with an emphasis on inclusion and diversity by embracing and welcoming all who request tours, program access and historical information. To borrow a quote from Jesse Jackson, "When everyone is included, everyone wins".

A Docent's View continued from page 1.

proprietor to proprietor. Jazz clarinetist Peanuts Hucko ran it as a jazz supper club in the 1960s. The Anschutz Corporation purchased the Navarre in 1997 and began the long process of renovating the modernizing the building to make it worthy of such fine art.

As a docent at the American Museum of Western Art, I suggest you come for a guided tour and get the full experience. You will see the exquisite Victorian restorations and décor and you will be fully immersed in paintings. The collection is displayed in a slightly unusual fashion, called salon style, wherein framed paintings line the walls from top to bottom, much a like a giant, gilded jigsaw puzzle. There are no labels, no text panels, no interactive screens or toys, just art. This allows visitors to compare artworks of similar subjects or time periods and simply take in the sights. Over three floors, the story of the American West unfolds in stunning landscapes, dramatic battles, nostalgic contemplations, and energetic impressions. I love telling that story, illustrated by treasures of American art at AMWA.

The Museum is open to the public on Mondays, Wednesdays, and Fridays, with guided tours at 10:00am and 1:00pm. Self-guided tours with an audio guide are available on those days between 10-4.

Membership Renewal

Membership in the Evergreen Mountain Area Historical Society aids in fulfilling many objectives. Members are offered opportunities to attend special presentations at no or reduced costs; receiving the bi-annual newsletter and electronic updates; a complimentary copy of the historical commission's annual publication, *Historically Jeffco* and availability of choice opportunities to volunteer at Hiwan Museum at many levels. Your membership dues enable the society to enhance the educational programs at Hiwan Museum and to present summer programs for students at our Medlen One-Room Schoolhouse. We also maintain extensive oral history, document and photographic archives

that are available for the public's use. EMAHS's sponsorship of community events helps to raise awareness of the importance of your local historical society to the community at large by partnering with area entities. EMAHS is your local history resource.

Please find the renewal form and self-addressed envelope in this issue of *The Record*. Our membership year renews in July so we have made it easy for you to mail your renewal to our membership committee. New members are always welcome. Thank you, in advance, for your continued support of your local historical society and your interest in our rich regional history.

Evergreen Mountain Area Historical Society 2017-2018 Officers

President	Elaine Hayden
Recording Secretary	Juanita Weare
Treasurer	Rosemary Barenbrugge
Corresponding Secretary	Diane Fuchs
Past President	Diane Fuchs

DIRECTORS AT LARGE

Director	Joan Ball
Director	Bill Bottoms
Director	Stuart Collins
Director	JoAnn Dunn
Director	Larry French
Director	Hank Fuchs
Director	Bud O'Leary
Director	Bud Weare

NON-BOARD POSITIONS

Webmaster	Clarence Low
Newsletter Editor	Laurie Romberg

Mary Helen Crain

By Stuart Collins

Mary Helen Crain was a celebrated Evergreen journalist, historian, and a founding member of the Jefferson County Historical Society – now Evergreen Mountain Area Historical Society. This multipart series shall examine Mary Helen Crain's professional work, life, and commitment to historical preservation.

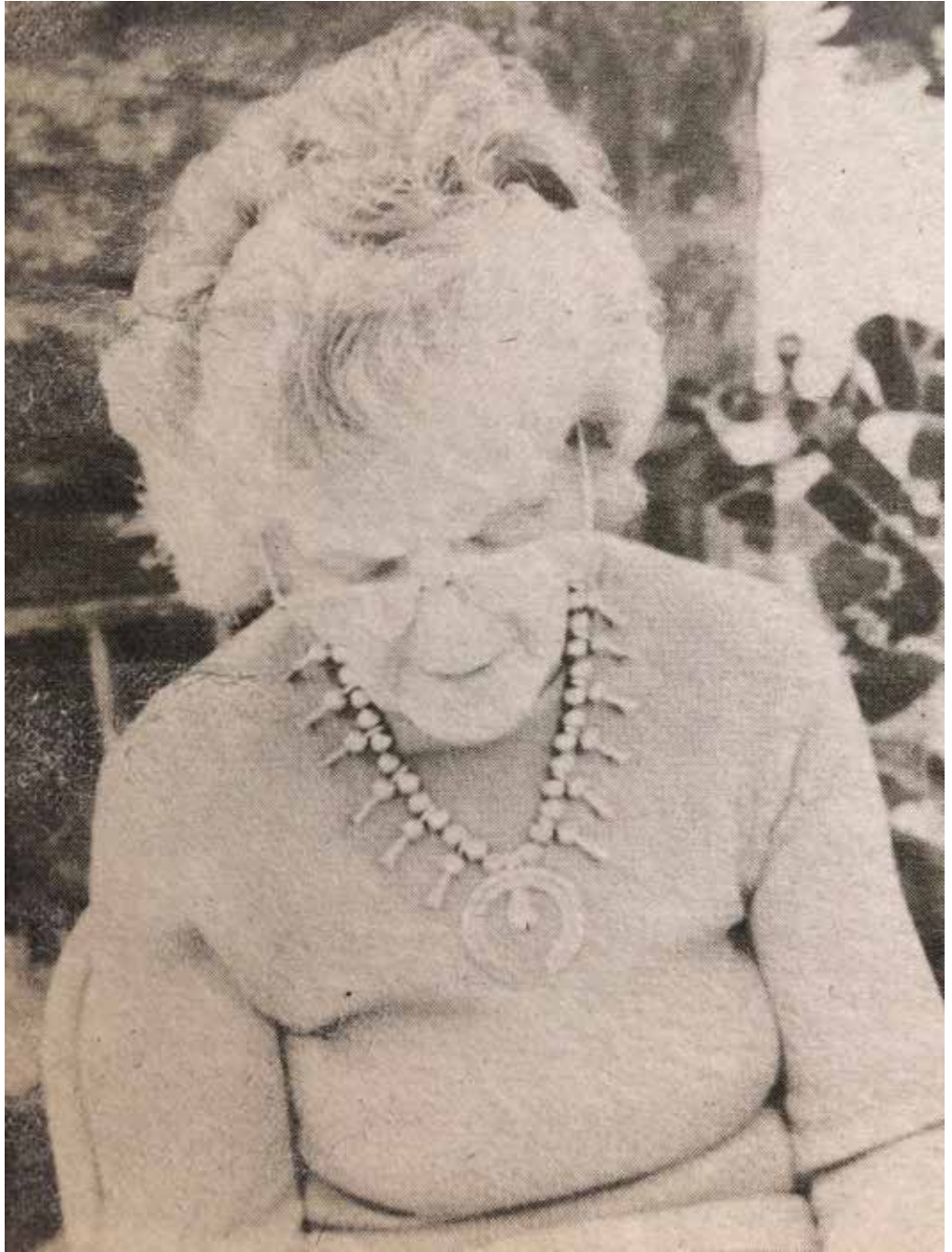
Part 2: Biography of Mary Helen Crain

"I miss horses tethered in front of the local bar, the old Round-Up. I know traffic prohibits it. I understand all that, but I do miss them."

In 1903 Mary Helen Proctor was born in Cincinnati, OH, where she spent most of her childhood until the ill health of her mother prompted her father to send Mary Helen to New England under the care of her aunt. Upon graduating high school Mary Helen attended Wellesley College for a short while until the death of her mother brought the daughter back home. Mary Helen Proctor completed her undergraduate studies at Miami University in Oxford, OH.

After graduating college Mary Helen Proctor married Willard Crain, a successful local florist and pioneering member of Florist Transworld Delivery Association (FTDA). For the next nineteen years Mary Helen Crain raised two kids, Dick and Nancy, and also helped her husband grow their florist shop and the FTDA enterprise.

In 1944, weary and ready "to retire from a busy social and business life in Cincinnati" the Crains packed up their belongings and moved to Spearfish Canyon, South Dakota. For the next three years the couple operated a guest lodge.



Mary Helen Crain

Yet, even while in South Dakota the Crains had already found their spot in paradise: Evergreen, Colorado.

As Mary Helen Crain recounts her husband's 1946 business trip, "he was active in the international Florist Transworld Delivery Association (FTDA) which involved him in a lot of traveling. Once, when he was at a meeting in Denver, friends brought him to Evergreen to have dinner at the newly opened Brook Forest Inn. He was strongly attracted to Evergreen's mountain setting, so when there was another meeting in Denver, he brought me along. That time we were taken to Troutdale, then in its heyday, for dinner. He looked across the lake from the dam and, seeing a green hill rising beyond, said, 'there is where I am going to live someday.'"

One year later the Crain family moved to Evergreen and they purchased a quaint house "with an impressive view of the Evergreen lake from its big picture window."

Shortly after moving to Evergreen the Crains purchased a shop in downtown Evergreen - Evergreen Crafters. The couple owned Evergreen Crafters for twelve years until they passed on the shop to their offspring.

The Crain family soon became quite active within the Evergreen community. Together, they helped found of the Evergreen Volunteer Fire Department, the ambulance service, the chamber of commerce, the Evergreen Players, The Canyon Courier, helped preserve 'Little Log Schoolhouse', and (and I am getting ahead of the story, here - see a subsequent article) the Jefferson County (later renamed Evergreen Mountain Area) Historical Society.

In 1958 the Crains co-founded the Canyon Courier. Mary Helen Crain joined the publication and she soon began publishing weekly, historical column titled 'Reminiscing' (and later, 'Chit Chat') that showcased the early, vibrant history of Evergreen and her surrounding community. From these columns Mary Helen Crain published two history books: *Evergreen* and *Circle of Pioneers*. During Mary Helen Crain's writing tenure, she received numerous local, state, and national journalism awards.

In 1973 Mary Helen Crain and others founded the Jefferson County Historical Society. In 1975, Mary Helen Crain and others were instrumental in housing the historical society within the newly purchased Hiwan Museum.

Willard Crain passed away in 1975 and in 1978 Mary Helen Crain suffered a stroke and retired from public life.

In 1978 the Evergreen Chamber of Commerce awarded Helen Mary Crain 'Person of the Year' and 'Historian Emeritus'. In 1980 Mary Helen Crain was inducted in the Hall of Fame of Jefferson County Historical Commission. The award said, "Her historical writings have been an inspiration to others to preserve the history of the Evergreen area."

When Mary Helen Crain died in 1988 the local community and publications eulogized the author. Of the many, many kind words written about this marvelous woman I chose these two quotes:

"Much of the history of Evergreen and Jefferson County would have been lost forever were it not for the talent, foresight, and writings of Mary Helen Crain"

"She was a woman of honor and integrity whose life's efforts will long influence those who knew her."

I know this: Mary Helen Crain was loved by many and her dedication to Evergreen is the very reason I write this essay.

Previous newsletter included:

Part 1: Mary Helen Crain and The Canyon Courier

Subsequent newsletters shall include:

Part Three: Selected Works of Mary Helen Crain

Part Four: Mary Helen Crain and the Jefferson County Historical Society

REGRETS

We extend our sincere sympathy to the family of Doyle Harrison.

Doyle designed the new logo for EMAHS in 2018 and was the graphic designer whose work with the Jeffco Historical Commission made the Historically Jeffco Magazine possible.

The Book Shelf

By Elaine Hayden

New to our book shelf is the beautifully illustrated and informative book, *Spider Woman's Children, Navajo Weavers Today*, written by Lynda Teller Pete and Barbara Teller Ornelas. These sisters grew up in the Two Grey Hills Trading Post area of western New Mexico and follow the traditions of five generations of weavers. The dedication and skill of the Navajo weavers showcased within the pages of this book is revealed in intimate glimpses into the inspirations and artistic process that is involved in producing these masterful works of art. Attaining the status of Master Weaver is no easy task. Years of spinning, weaving, and learning the spiritual significance of the Navajo weaving process is vital for a

Master Weaver. A major focus of a Navajo weaver is the traditional method, prayers and songs incorporated into each weaving, as well as the importance of passing down to emerging generations, the cultural traditions learned from elders.

Belvin Pete and Terry Lee are profiled in this book as being the makers of tools that are a critical component of traditional Navajo weaving techniques. Belvin, Lynda's husband, holds a degree in mechanical engineering that has enabled him in his designing and construction of prized looms and spindles. Terry Lee, Lynda's nephew, grew up within a Navajo weaving family and has learned the importance of tradition in his work as a tool maker. Terry is a

builder of weaving combs, looms and other tools necessary to this art form.

A photographic gallery of many regional and historical period styles of Navajo weaving adds to the enjoyment of this book and notes the influence of location, background and life experiences as determining factors in a weaver's designs. *Spider Woman's Children* delves into the process of gathering wool, spinning and dyeing yarns and assembling the loom that brings a renewed appreciation to the art of Navajo weaving and to the generations of Navajo weavers whose story is revealed within the book. *Spider Woman's Children* is available for purchase from EMAHS at Hiwan Museum.

EVERGREEN
Mountain Area
HISTORICAL SOCIETY

Fall Fundraiser

MOONSHINERS & GUNSLINGERS

Sunday
SEPTEMBER
22, 2019

Presentation by John Steinle

4 PM to 6 PM
Timbervale Barn
4148 Timbervale Drive, Evergreen

A silent Auction will be part of the evening activities
Specialty Hors d'oeuvres by Three Tomatoes Catering

\$20 members \$23 non-members before September 1
\$22 members \$25 non-members after September 1
Reserve Your Evening of Fun at JCHSColorado.org
or reserve with a check to JCHS/EMAHS and mail to
P.O. Box 703
Evergreen, Colorado 80437

EMAHS Book Club

Book group meetings are held on the fourth Wednesday of each month except for November and December. We gather at Eric's House (museum offices) at 12:30 pm. Suggested book titles are considered from within our membership. Everyone is welcome to join us. As of this printing, book selections are not complete. Titles under consideration include:

The Tattooist of Auschwitz by Heather Morris

Becoming by Michelle Obama

The Miniaturist by Jesse Burton

Educated by Tara Westover



Western Slope Peaches for Sale

\$37

Order by July 28th

at JCHSColorado.org or by check
JCHS/EMAHS
P.O. Box 703

Evergreen, Colorado 80437

**Arrive the first or second week in
August-you will be notified.**

Upcoming Events

Ongoing throughout the summer:

Coffee Talk at Hiwan Heritage Park: Third Sunday of each month-- 11 am to noon. Enjoy a cup of coffee and a chat with Hiwan and JCOS staff. Questions answered; coffee and outdoors enjoyed.

Yoga in the Grove: Through September 22nd. Sundays 11 am to noon. Grove weather permitting.

JUNE: Medlen School Days in progress. May 28-30; June 4-6; June 11-13

JUNE: Discovery Days day camp at Hiwan Museum In progress.
June 4-7; June 11-14

JUNE 9: Membership brunch and Board elections. The Wild Game Restaurant
11am to 1 pm. Reservations required.

JUNE15: Evergreen Rodeo Parade

JUNE 17: Hiwan Museum hosts the Assoc. of Northern Front Range Museums (ANFRM) Meeting, tours of Hiwan Museum and ice cream social.

JULY 18, 23, 25, 30: Hiwan Kids. A program designed for youngsters with a focus on fun and historic crafts and games.

TBD: New Hiwan Museum exhibit will focus on the artists and artwork inspired by Camp Neosho/Hiwan Ranch.

TBA: Fifth History Round Table featuring a presentation of area historical interest.

AUGUST: Annual Peach Sale. First week of the month welcomes delivery of Western Slope Peaches to Hiwan. Watch for notice of required pre-delivery reservations.

AUGUST 2: Movie in the Grove hosted by JCOS. In keeping with the theme of the Hiwan exhibit, the film, *The Painting (Le Tableau)* by Jean-Francois Laguionie will be shown at dusk. Free to the public. Popcorn and drinks will be sold by EMAHS.

SEPTEMBER 16: Harvest Tea. Enjoy a delicious and elegant tea served on fine china in the historic setting of Hiwan Museum. Reservations are required for the 11 am and 2 pm seatings.

SEPTEMBER 22: Fall Fundraiser from 4 to 6 pm. Special event featuring John Steinle at the Timbervale Barn at Hiwan. Steinle will present 'Moonshiners & Gunslingers' and will be available for book signing of his books, *Evergreen* and *Conifer*. A fun silent auction will be on tap. Catering by 3 Tomatoes. Check EMAHS web site jchscolorado.org for more information and notice for this and all other events.

For More Information

For more information about the
Evergreen Mountain Area Historical
Society or Events happening at
Hiwan Museum go to

www.jchscolorado.org



Picture provided by Laurie Romberg

The Record is published two times per year by the Evergreen Mountain Area Historical Society. Deadline for the Fall/Winter 2019 issue is November 1. Email your submissions to Laurie Romberg at laurie@rombergdesignsplus.com.



P.O. Box 703
Evergreen, CO 80437