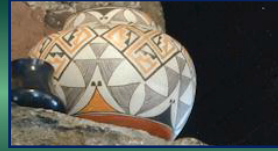




# The Record



Winter 2022



EMAHScolorado.org

## A Letter From The EMAHS President

As with many other businesses and organizations, EMAHS is in the process of transitioning to a state of operation that reflects pre-pandemic norms. While the scope of EMAHS extends beyond Hiwan Museum, much of our news relates to the museum. We have been limited in our ability to host events at the museum and other venues; however, with the easing of COVID protocols and restrictions, Hiwan Museum has reopened access to the historic house. As January through March are typically the months of low guest visits, tour guides are still desperately needed to fill shifts from Tuesday through Friday from 12 to 4pm. If you are a trained docent or if you would like to join our docent team, please contact our on site volunteer coordinator, Andrea Keppers at [akeppers@co.jefferson.co.us](mailto:akeppers@co.jefferson.co.us) to sign up for a shift or to receive training. This is an opportunity to become more involved with the protection and presentation of Evergreen mountain area history. Volunteers have been the backbone of our Society since its inception and I'd not like to see this tradition of volunteerism vanish. **Our Society will acknowledge our 50th year anniversary in 2023 so let's continue the celebration of Evergreen history for many more milestone years by keeping our volunteer team strong.** Please consider this request to join us in this satisfying endeavor.

A team of University of Denver students have been hired as interns to complete the digitization of our extensive photo and document collections. These interns will facilitate the transference of our files to the Colorado Virtual Library that is identified as an assessable online research tool. More information and details available at [www.cvlcollections.org](http://www.cvlcollections.org)

The summer educational programs at Medlen School and Hiwan Discovery Days are planning for another summer of fun and are accepting online applications. The sessions will be held in June and will once again continue the tradition of presenting area history to school age students.

Jefferson County Open Space land acknowledgement was approved by the Open Space Advisory Committee (OSAC) in January following a presentation made by Jennee Hancock to One Community Summit concerning land acknowledgement. This approval recognizes and respects the indigenous history and traditional territories of Native peoples on what are now considered JCOS properties.

Watch for the full newsletter due in June, 2022 that will report on upcoming events that are currently in the planning stages.

**Sadly, we said goodbye** to a Hiwan friend, Paul Waldmann, on December 25, 2021. Paul was a supporter of our Society and offered his time and expertise in antique and art evaluation on many occasions. Paul's wife, Candy Porter, has been a permanent fixture at Hiwan Museum and as an active supporter of the Society. We send our condolences to Candy and her family.

### Evergreen Mountain Area Historical Society

Physical Address: 28743 Meadow Drive, Evergreen, CO

Mailing Address: P.O. Box 703, Evergreen, CO 80437

[EMAHScolorado@gmail.com](mailto:EMAHScolorado@gmail.com)

[EMAHScolorado.org](http://EMAHScolorado.org)

President: Elaine Hayden

Newsletter Editor: Laurie Romberg